

## Achieve astounding print quality from a fast, reliable LED color printer built to perform

The C712dn, powered by OKI LED technology, provides mid to large size workgroups a dependable and secure HD color printer for demanding deadlines, while enhancing office productivity with a low total cost of ownership.

### Key features

- HD Color LED printing technology with multi-level output quality
- Flexible media capabilities including up to 52" banners and a variety of heavy stock media
- Google Cloud Print 2.0 ready enabling printing on the move and direct printing using Local Mode
- Low running costs
- Security features protecting your documents, your devices and your network

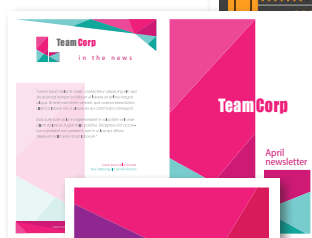
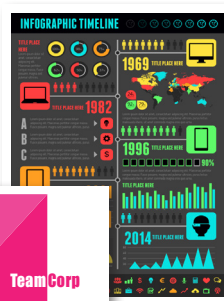


### Simplicity

- Easy to set-up and get started.
- As new features become available, update the printer via the OKI portal

### Security Features

- Keep documents confidential with Private Print<sup>™</sup> and optional Card Release while selecting which jobs to print
- Internet Protocol Security (IPSec) compliance, ensuring that documents are safely sent and received



### Cost and energy saving

- LED technology means high reliability, less down time, and longer life
- ENERGY STAR<sup>®</sup> Compliant
- Enable Toner Save Mode to reduce costs
- Duplex printing reduces paper usage
- Low power consumption with Deep Sleep mode and Auto-Off mode
- Free consumables recycling program
- Create cost efficiencies printing outstanding high quality marketing materials in-house with LED technology and media flexibility

### Advanced connectivity

- Print direct using front facing USB port
- Google Cloud Print 2.0 ready
- Wireless Direct offers safe simultaneous connection of wired and wireless networking
- Gigabit Ethernet enables fast transfer of large color files across the network
- Optional Wireless LAN Module available

A4 / Letter	✓
Color / Mono	✓
Networked / Duplex	✓
1 – 45 Users	✓

# C712dn Color Printer

PERFORMANCE	
<b>Print Speed</b>	Up to 35ppm Color/ 37 ppm Mono <sup>1</sup>
<b>Time to First Page</b>	9 seconds Color, 8 seconds Mono <sup>1</sup>
<b>Processor</b>	533 MHz
<b>Print Resolution</b>	Up to 1200 x 600 dpi
<b>Monthly Duty Cycle</b>	Maximum up to 100,000 pgs/month
	Recommended up to 6,000 pgs/month
<b>Operator Panel</b>	Mono Graphic Panel
<b>Memory</b>	256 MB Standard; 768 MB Max; Optional SDHC 16GB

INTERFACE AND SOFTWARE	
<b>Connectivity</b>	USB 2.0 Device, 10 Base-T/100 Base-TX/1000 Base-T Ethernet; Wireless (Option) IEEE802.11a/b/g/n
<b>Printer Languages</b>	PCL6 (XL3.0) and PCL5c, Postscript 3 (emulation), IBM-PPR, EPSON-FX, XPS, PDF (V1.7)
<b>Network Protocols</b>	TCP/IPv4&v6, NetBIOS over TCP, DHCP, DHCPv6, BOOTP, HTTP, HTTPS, DNS, DDNS, WINS, UPNP, Bonjour, SMTP, SMTPS, POP3, SNMPv1&v3, SNMP, IPP, IPPS, WSD Print, LLTD, IEEE802.1X, LPR, Port9100, Telnet, FTP, FTPS, IPsec, Google Cloud Print 2.0, Wireless IEEE802.11a/b/g/n, WEP, WPA(Personal, Enterprise), WPA2(Personal, Enterprise)
<b>Operating Systems</b>	Vista (32-bit & 64-bit) / Server 2008 (32-bit & 64-bit) / Windows 7 (32-bit & 64-bit) / Server 2008 R2 (64-bit) / Windows 8 (32-bit & 64-bit) / Server 2012 (64-bit) / Windows 8.1 (32-bit & 64-bit) / Server 2012 R2 (64-bit) / Windows 10 (32-bit & 64-bit); Linux PPD; Mac OSX 10.8.5 to 10.11
<b>Utility Suite</b>	Color Correct, OKI LPR <sup>5</sup> , Color Swatch Utility <sup>5</sup> , smart PrintSuperVision <sup>5</sup> , Print Job Accounting Client, Web Driver Installer <sup>5</sup> , Network Card Setup <sup>5</sup> , Configuration Tool <sup>5</sup> , PS Gamma Adjuster, PDF Direct Print <sup>5</sup> , Firmware Update Tool, Profile Assistant <sup>5</sup>

TYPEFACES	
<b>Printer Fonts</b>	Scalable: 87 PCL fonts, 80 PostScript fonts
<b>Bitmap Fonts</b>	4 PCL fonts (Line Printer, OCR-A/B, USPS ZIP Barcode)
<b>Barcode</b>	10 types of one dimension with 26 variations: UPC-A, UPC-E, EAN/JAN-8, EAN/JAN-13, Interleaved2of5, Code39, Code 128, EAN/UCC-128, CODABAR, ZIP+4POSTNET; 2 types of two dimensions: PDF417, JIS-X0510, QR code Model 2

PAPER HANDLING	
<b>Input Capacity</b>	630 sheets of 80gsm Standard (530-sheet Main Tray + 100-sheet Multi-Purpose Tray); 1,690 sheets Max (with Optional 530-sheet 2nd & 3rd Trays)
<b>Paper Sizes</b>	Main Tray/Duplex/Optional Tray from 5.8" x 8.3" to 8.5" x 14"; Multi-Purpose Tray from 2.5" x 5.0" to 8.5" x 52" banners
<b>Paper Weight</b>	Main Tray / Duplex / Option Tray: 64-220gsm; Multi-Purpose Tray: 64-250gsm
<b>Paper Output Capacity</b>	Main Output Bin 350 sheets face down; MPT 100 sheets face up
<b>Duplex (2-sided) Printing</b>	Standard

ENVIRONMENTAL	
<b>Size (WxDxH)</b>	17.1" x 23.8" x 15.3" (435mm x 604mm x 389mm)
<b>Weight</b>	Approx. 68.3 lbs (31 kg)
<b>Acoustic Noise</b>	Operating 54dBA or less; Standby 37dBA; Power Save Inaudible
<b>Power Consumption</b>	Typical: 600W; Peak: 1300W; Idle: 100W; Power Save: <15W; Deep Sleep: <0.9W; Auto-Off: <0.5W
<b>ENERGY STAR 2.0 Compliance</b>	Yes

WARRANTY	
<b>Printer</b>	1-Year On Site <sup>2</sup>
<b>LED Printheads</b>	5-Year limited warranty

H/W	
<b>C712dn, 120V</b>	62447801

CONSUMABLES (ORDER NUMBERS)	
<b>Toner cartridges<sup>3</sup> (11,500 pages)</b>	<b>Cyan:</b> 46507603; <b>Magenta:</b> 46507602; <b>Yellow:</b> 46507601
<b>Toner cartridge<sup>3</sup> (11,000 pages)</b>	<b>Black:</b> 46507604
<b>Image drums<sup>4</sup> (30,000 pages)</b>	<b>Cyan:</b> 46507403; <b>Magenta:</b> 46507402; <b>Yellow:</b> 46507401; <b>Black:</b> 46507404

OPTIONS (ORDER NUMBERS)	
<b>530-sheet 2nd/3rd Paper Tray</b>	44274501
<b>256 MB RAM</b>	70061801
<b>512 MB RAM</b>	70061901
<b>16 GB SDHC Memory Card</b>	70061701
<b>IEEE802.11a/b/g/n Wireless</b>	45830201



<sup>1</sup> Published performance results based on laboratory testing. Individual results may apply.

<sup>2</sup> Available in the U.S. and Canada only.

<sup>3</sup> Average A4 continuous print page yield in accordance with ISO/IEC 19798. Individual results may vary. Printer shipped with toner for 4,000 A4 pages.

<sup>4</sup> Estimated average life, based on 3 pages per job.

<sup>5</sup> Windows only.

<sup>6</sup> Mac OSX only.

<sup>7</sup> SDHC memory card required.

Specifications are subject to change without notice.

© 2017 Oki Data Americas, Inc. OKI Reg. T.M., M.D., Oki Electric Industry Co., Ltd. Adobe Reg. T.M., PostScript 3 T.M., Adobe Systems, Inc. PCL Reg. T.M., Hewlett-Packard Co. Windows, Windows Vista Reg. T.M., Microsoft Corp. XPS Reg. T.M., Dell, Inc. Mac Reg. T.M., Apple Inc. Harlequin Reg. T.M., MultiRIP, DirectPrint, T.M., Global Graphics Software Ltd. EFI Reg. T.M., Electronics for Imaging, Inc. ENERGY STAR Reg. T.M., US EPA. Google Cloud Print is a trademark of Google Inc.

Printed in the USA

MS16181-0317

## OKI DATA AMERICAS, INC.

### USA

2000 BISHOPS GATE BLVD.  
MOUNT LAUREL, NJ 08054-4620  
TEL: 800.OKI.DATA (800.654.3282)  
FAX: 856.222.5320

### CANADA

5800 HURONTARIO ST. SUITE  
1020 MISSISSAUGA, ONTARIO L5R 4B9  
TEL: 905.608.5000  
FAX: 905.608.5040

WWW.OKIDATA.COM

# OKI®